

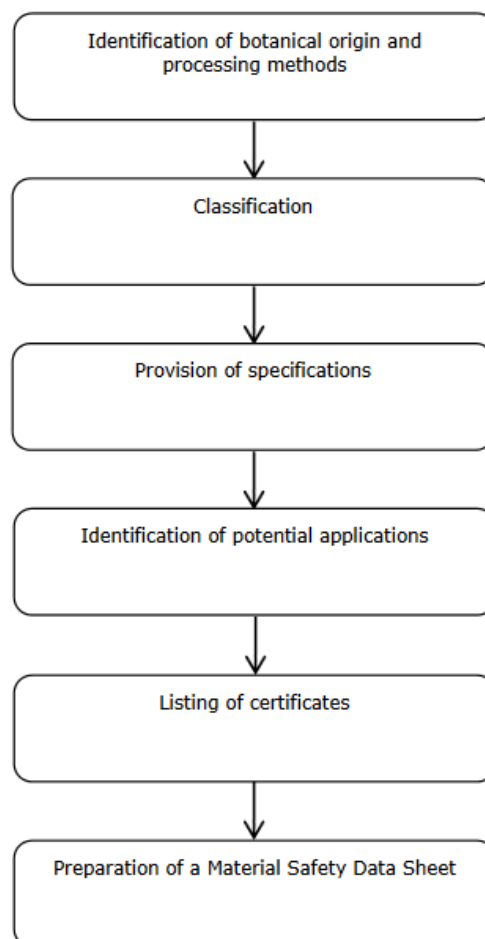


Technical Data Sheet TDS or Product Specification

= the Passport of each of your products!

Workbook for preparation of a TDS <https://www.cbi.eu/sites/default/files/manual-technical-data-sheet-preparation-2015.pdf>

The development of a TDS – step by step:





TECHNICAL DATA SHEET ESSENTIAL OIL OF MEXICAN LIME EXPRESSED TYPE "A"

CAS N° : 90063--52-8

FEMA N°: 2631

❖ GENERAL DESCRIPTION

The essential oil obtained by centrifuging of the oil-juice emulsion resulting from pressing the Key lime fruit (*Citrus aurantifolia* Swingle) in a screw press.

❖ SENSORIAL CHARACTERISTICS

Aspect: Clear liquid which often shows a waxy precipitate

Color: Yellow to brownish green or light green

Odor: Fresh, citrus, reminiscent of lime juice.

❖ PHYSICAL AND CHEMICAL CHARACTERISTICS

	MINIMUM	MAXIMUM
Refractive index @ 20°C	1.4820	1.4860
Optical rotation @ 20°C	+35.0°	+41.0°
Specific gravity @ 25/25°C	0.872	0.881
Carbonyl compounds (as citral) %	4.0	8.5
Residue on evaporation %	10.0	14.0

❖ PACKING

Iron drums with an interior epoxy-phenolic varnish with a net weight of 25, 50 or 181.5 Kg.

❖ METHODS OF ANALYSIS

Determination of refractive index: ISO-280:1998

Determination of optical rotation: ISO-592:1998

Determination of relative density: Method of digital densimeter

Determination of carbonyl value: ISO-1271:1983

Gas Chromatography		Specifications		
Type	Compound	AVG	MIN	MAX
Peak	α -thujene	0.41	0.36	0.46
Peak	α -pinene	2.39	2.24	2.55
Peak	camphene	0.11	0.10	0.12
Peak	sabinene	3.09	2.53	3.65
Peak	β -pinene	20.30	19.00	21.10
Peak	myrcene	1.35	1.25	1.46
Peak	octanal	0.05	0.03	0.07
Peak	α -phellandrene	0.06	0.05	0.07
Peak	δ -3-carene	0.01	0.00	0.01
Peak	α -terpinene	0.24	0.16	0.31
Peak	p-cymene	0.19	0.00	0.31
Peak	d-limonene	47.80	46.53	49.06
Peak	γ -terpinene	8.11	6.71	9.50
Peak	terpinolene+nonanal	0.44	0.35	0.54
Peak	linalool	0.20	0.16	0.24
Peak	...	0.04	0.03	0.06



TECHNICAL DATA SHEET

RODA Omega Oil

Product name: Sacha Inchi (*Plukenetia volubilis L.*) oil

ANALYSIS	SPECIFICATION	METHOD
Acid value	< 4.0 mg KOH/g	AOAC 1990 940.28
Peroxide value	< 10.0 meq O ₂ /Kg	AOAC 1990 965.33
Saponification value	189.0 - 199.0	AOCS Cd 3-25
Unsaponifiable matter	< 2.0%	AOCS Ca 6b-53
Moisture and volatile matter	< 0.2% m/m	AOAC 1990 926.12
Lead	< 0.1 ppm	AOAC 999.11 Vol I c9
Arsenic	< 0.1 ppm	AOAC 986.15 Vol I c9
Mercury	< 0.05 ppm	AOAC 971.21 Vol I c9
Iron	< 1.5 ppm	AOAC 999.11 Vol I c9
<u>Fatty acids composition</u>		ISO 5508-1990, ISO 5509-2000
Palmitic C16:0	4.00 ± 1.00 %	
Stearic C18:0	2.50 ± 1.00 %	
Oleic W9 C18:1	9.00 ± 2.00 %	
Linoleic W6 C18:2	34.00 ± 2.00 %	
Linolenic W3 C18:3	50.00 ± 3.50 %	
Others	< 1.5 %	

■ Distribution

Drums: 20Lt, 208Lt

Bottles: 250ml

■ Storage conditions

Keep in a dry and fresh place under 30°C and away from sunlight.

■ Shelf life

18 months under good conditions and without opening.



Material Safety Data Sheet MSDS or Safety Data Sheet SDS

According to EC Directive 2001/58/EC

1. IDENTIFICATION OF THE SUBSTANCE/PREPARATION AND THE COMPANY/UNDERTAKING
2. HAZARDS IDENTIFICATION
3. COMPOSITION/INFORMATION ON INGREDIENTS
4. FIRST AID MEASURES
5. FIRE-FIGHTING MEASURES
6. ACCIDENTAL RELEASE MEASURES
7. HANDLING AND STORAGE
8. EXPOSURE CONTROLS / PERSONAL PROTECTION
9. PHYSICAL AND CHEMICAL PROPERTIES
10. STABILITY AND REACTIVITY
11. TOXICOLOGICAL INFORMATION
12. ECOLOGICAL INFORMATION
13. DISPOSAL CONSIDERATIONS
14. TRANSPORT INFORMATION
15. REGULATORY INFORMATION
16. OTHER INFORMATION